

Tejido Group Garners Awards

By Sarah Smith '09 JOUR, CALA Student Marketing Assistant

Tucson, Arizona — Perhaps few at The University of Arizona can claim they received three distinguished awards within 10 days. However, the Tejido Group has done just that.

The University's President's Showcase Award, Student Showcase Award and the American Society of Landscape Architects Honor Award were presented to the Tejido Group in recognition of excellent designs for communities in Arizona and Panama.

The Tejido Group is a non-profit organization coordinated by Dr. Mark Frederickson, an associate professor in the School of Landscape Architecture in the College of Architecture and Landscape Architecture (CALA). Dr. Frederickson directs the organization as it utilizes CALA students to collaborate with professors and professionals on outreach projects throughout North America and Central America. The Tejido Group concentrates on research and design projects for communities and places a strong emphasis on student learning. Since its inception in 1991, Tejido has worked on many different project types: eco-tourism development and resort design; urban design; small town revitalization and planning; and harbor revitalization and coastal planning.

Frederickson said criteria for selecting projects are based on the potential for widespread, positive outcomes. "Pedagogic value in the professional development of our students, client need and the potential positive impacts the project will have on the surrounding natural and socio-cultural environment are all important factors in project selection," Frederickson said. "Tejido is unique in that we are self-sufficient and have never required subsidy from the University. Though we are a non-profit organization, we have been able to sponsor student research and community outreach projects throughout Arizona, Central America and the Caribbean. We are pleased with this financial viability and independence. This also serves as an appropriate economic model in our students' professional development."

The Pinetop-Lakeside Project, first-place winner of the President's Showcase Award, is a design for the community of Pinetop-Lakeside, Ariz. (note attached graphic). Planning of the community included the development of urban mixed-use infill nodes connected by urban trails, waterways and parklands and greenways. Phasing and land acquisition strategies were researched along with a discussion of potential sources of project funding. Students who participated in this project were Lukas Sokol '06 MLA, Sarae Hoff '07 MLA, David Marhefka '08 MLA, Chris Rose '08 MLA, Dara Weidner '07 MLA and Paul Frederickson '11 BArch.*

"Dealing with small-town sprawl was one of the biggest challenges of the project," Rose said. "Pinetop-Lakeside is a high-mountain, resort town that has been growing over the past few years and when many people move there at once, it's not such a small town anymore. We addressed the growth and helped residents realize the potential of the land."

The Student Showcase Award was also presented to students who worked on the Show Low Civic Center Project in Show Low, Ariz. The town was in need of a new civic community center that was compatible with the terrain and still met the needs of the residents. Through land analysis, a community survey and public meetings, the group assessed the priorities of the town and developed a series of design concepts to be used for construction. The students who participated were Yariela Cedeno Dominguez '07 MLA, Heidi Flugstad '07 MLA, Sarae Hoff '07 MLA, Wendy Lotze '07 MLA, Barry Morse '07 MLA, Maria Ruedinger '07 MLA, Dara Widner '07 MLA, Bev Wilson '06 MLA and Joss Jaffe '07 MLA.* The Showlow Civic Center project also received an Honor Award from the American Society of Landscape Architects. The Civic Center was the third in a series of three Show Low master planning projects

As an extension of an earlier Tejido project in the historic Barrio Exposición neighborhood of Panama City, Panama, for its Ministry of Housing, Lukas Sokol '06 MLA focused his thesis on revitalizing the urban waterfront and surrounding residential areas. The design included new inner-city transportation concepts, mixed-use infill, urban greenways and coastal environmental remediation strategies. Sokol's thesis also received an honors award in the Student Showcase and he was invited to present his work in Panama before the Ministry of Housing and the Panamanian Society of Architects and Engineers.

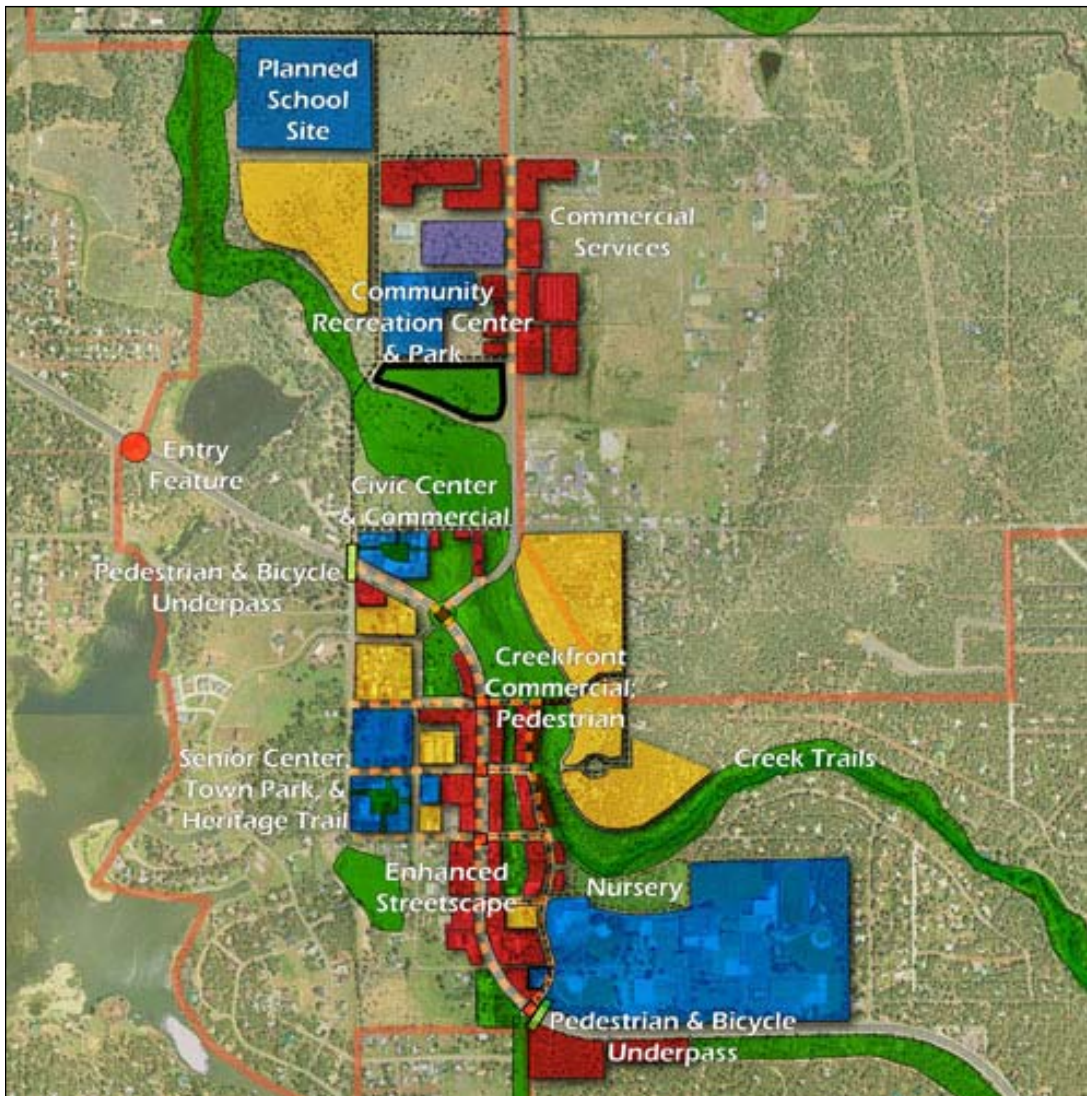
Tejido has also received two Master Plan of the Year Awards (Professional Planners Category) from the Arizona Planning Association.

Upcoming for the 2007 spring and summer sessions are several new projects. A \$19,900 grant will launch a revitalization plan for Springerville, Ariz. Tejido has received a new grant for \$18,000 for master planning a 583-acre park in Pinetop-Lakeside. Tejido also has been approached to develop two tourism master plans in Mexico this summer: a 500-hectare parcel in San Carlos and an eco-tourism master plan for the 10,000-hectare de Hoyos ranch in Cananea. Interdisciplinary teams of UA graduate students will be involved in doing much of the work.

The Tejido Group continues to work on projects that improve communities across the U.S. and Latin America, and is continually recognized for its efforts. For more information about the Tejido Group, contact Mark Frederickson at mpt@u.arizona.edu or (520) 621-3948.

*Anticipated graduation dates and degrees: listings do not indicate officially conferred degrees.

DEVELOPMENT PLAN FOR PINETOP-LAKESIDE, ARIZ.



Tejido Group Outreach. At present Pinetop-Lakeside has a five-lane highway with uncontrolled growth along both sides. There are no interactive spaces, town squares or main streets. As a means of creating an enhanced sense of place in Pinetop-Lakeside, Tejido proposed a series of mixed-use development nodes along Highway 260 separated by preserved open space and connected by riparian greenways. The image above represents one of the proposed development nodes encompassing the high school and an historic area of Lakeside.